

MAIR100 series

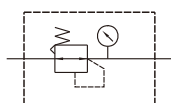
AIR UNIT (PRECISION REGULATOR)



mindman



Symbol



Specification

Model	MAIR100
Bore No.	6A
Port size	1/8
Medium	Air
Max. operating pressure	1 MPa
Min. operating pressure	Setting pressure + 0.05 MPa
Proof pressure	1.5 MPa
Regulated pressure range	2K: 0.005~0.2 MPa
	4K: 0.01~0.4 MPa
	8K: 0.01~0.8 MPa
Sensitivity	Within(E) 0.2% of full span
Repeatability	Within(E) ± 0.5% of full span
Air consumption (※)	4.4 ℓ/min(ANR) of full span
Ambient temperature	- 5~ + 60°C (No freezing)
Attachment	Bracket
Option	Pressure gauge (PG-33S)
Weight	150 g

Order example

MAIR100-6A-2K-C-□

MODEL

BORE SIZE

6A: 1/8

PRESSURE RANGE

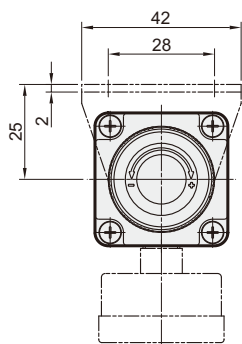
2K: 0.005~0.2 MPa
4K: 0.01~0.4 MPa
8K: 0.01~0.8 MPa

PRESSURE GAUGE (PG-33S)

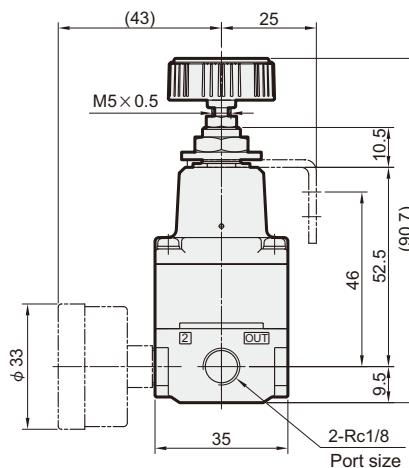
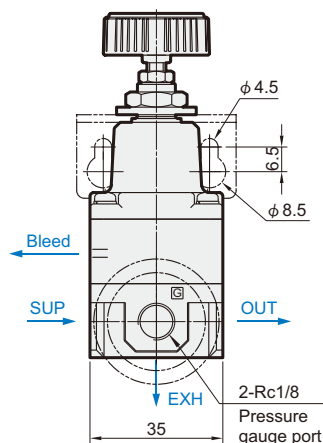
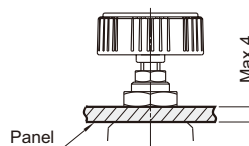
PORT THREAD

Blank: Rc thread
G: G thread
NPT: NPT thread

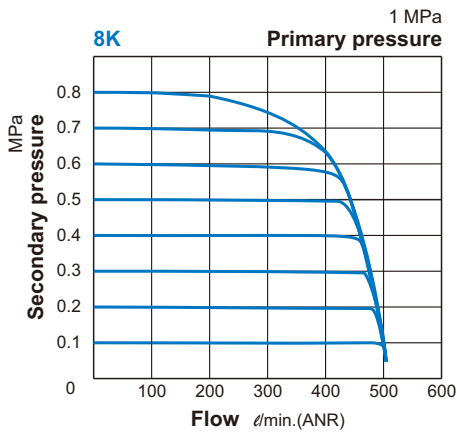
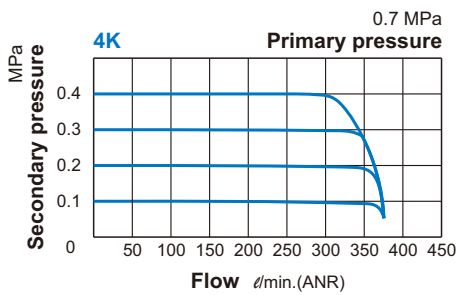
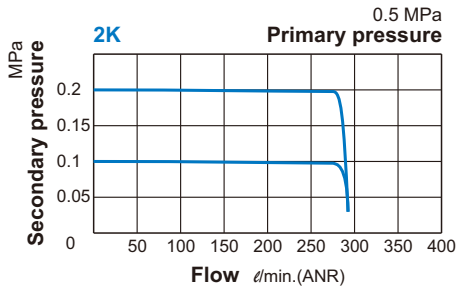
※ For supply pressure 1 MPa.



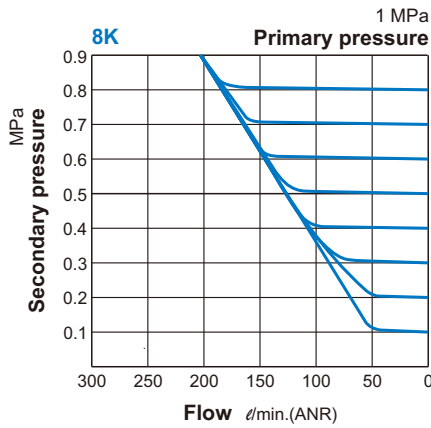
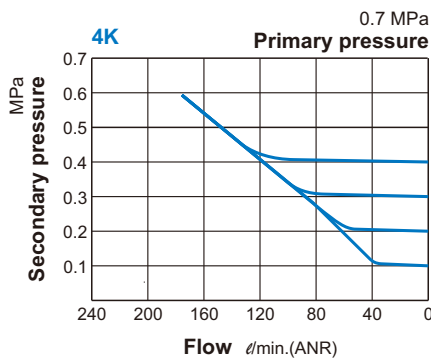
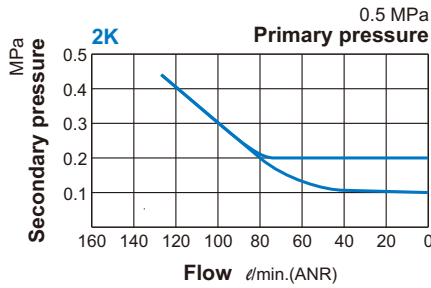
Panel mounting hole



Flow feature



Relief characteristics



Pressure characteristics

