

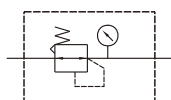
MAR302 series

AIR UNIT (R.UNIT)



Option: MP41

Symbol



Specification

Model	MAR302		
Bore No.	8A	10A	15A
Port size	1/4	3/8	1/2
Medium	Air		
Max. operating pressure	1 MPa		
Proof pressure	1.5 MPa		
Regulated pressure range	0.05~0.85 MPa		
Ambient temperature	-5~+60°C (No freezing)		
Attachment	Pressure gauge (PG-20), bracket		
Weight	270 g		

Order example

MAR302 — 8A — C — E1 — □

MODEL

BORE SIZE

8A: 1/4
10A: 3/8
15A: 1/2

C: External pressure gauge (PG-40)

PRESSURE SWITCH

E1: MP41P-02
E2: MP41P-02-QD
E3: MP41P-02-J
E4: MP41P-02-QD-J
E5: MP41P-04
E6: MP41P-04-QD
E7: MP41P-04-J
E8: MP41P-04-QD-J

※ Refer to page 6-11 for the option of digital pressure switch MP41.

PORT THREAD

Blank: Rc thread
G: G thread
NPT: NPT thread

Flow feature

