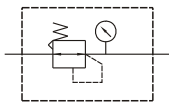


MAR310 series Stainless steel #316 type

AIR UNITS (R. UNIT)



Specification:

Model	MAR310	
Bore No.	8A	10A
Port size	PT 1/4	PT 3/8
Medium	Air	
Operating pressure range	0~9.9kgf/cm ² (0~0.99MPa)	
Proof pressure	15kgf/cm ² (1.5MPa)	
Effective orifice	25 mm ²	34 mm ²
Regulation pressure range	0.5~8.5kgf/cm ² (0.05~0.85MPa)	
Ambient temperature	-5~+60°C (No freezing)	
Attachment	Bracket	
Option	Pressure gauge	
Weight	1000 g	

Order example:

MAR310 – 8A – BSP

MODEL

BORE SIZE
8A : PT 1/4
10A : PT 3/8

PORT THREAD
Blank: PT thread
BSP: BSP thread
NPT: NPT thread

