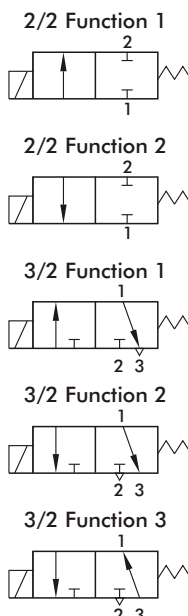


MJ*/MRJ series

2/2, 3/2 WAY PLUNGER SERIES ACTUATOR VALVE



Specification :

- IP65 100% ED coil
- PTB approval EExmII T4 coil
- For air, water, gas, oil, vacuum (10^{-3} torr).

Power consumption:

Coil power	4	5	3E
AC(VA)	17.6/15.4	33/23	9.2
DC(W)	15	18.5	10

Dimensions:

Model	MJS/MJR	MJT/MRJ
Code	00	
Dimension (mm)		
H	67	86
N.W.(Kg)	0.31	0.32

Order example:

MJS-00-1-N-S-4-D-□-AC

MODEL
MJS
MJR
MJT
MRJ

CODE
00

FIG.
1, 2, 3, 4, 5

SEAL MAT'L
N: NBR
J: EPDM
V: Viton

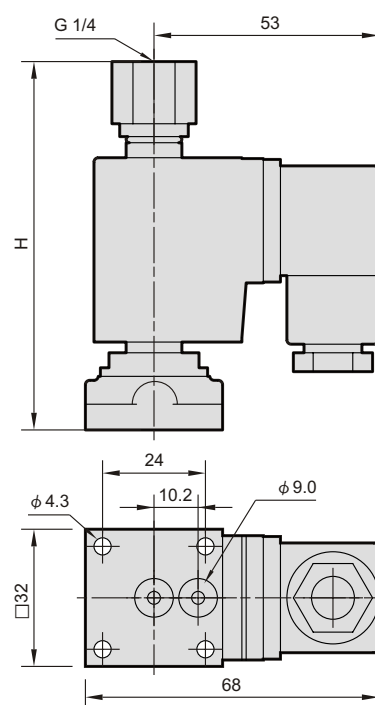
BODY MAT'L
C: Brass
S: S. Steel

COIL
4, 5, 3E

PLUG
□: DIN
D: LED
G: 1/2"NPTF

MANUAL
□: Without
M: With

VOLTAGE



Specification:

Model MJS : Brass body, 2/2 way N.C. actuator valve.																		
Code	Fig. no.	Mat'l		Coil	Orifice mm	Temp. 5~℃						Working press. (0~ bar)						CV
		Seal	Body			Coil 4/3E			Coil 5			Coil 4		Coil 5		Coil 3E		
						Function 1												
						N	J	V	N	J	V	AC	DC	AC	DC	AC	DC	
00	1	N	C S*	4 5 3E	1.6	80	150	90	150			30	20	40	30	20	14	0.10
	2				2.0					20	14	30	20	14	10	0.15		
	3				2.2					14	10	20	14	10	7	0.20		
	4				2.5					10	7	14	10	7	5	0.31		
	5				3.0					7	5	10	7	5	4	0.42		

Model MJR : Brass body, 2/2 way N.C. round trip actuator valve.																					
Code	Fig. no.	Mat'l		Coil	Orifice mm	Temp. 5~℃						Working press. (0~ bar)									CV
		Seal	Body			Coil 4/3E			Coil 5			Coil 4			Coil 5			Coil 3E			
						N	J	V	N	J	V	AC	DC	A/DC	AC	DC	A/DC	AC	DC	A/DC	
00	1	N	C S*	4 5 3E	1.6	80	150	90	150	30	20	10	40	30	14	20	14	7	0.10		
	2.0				20					14	7	30	20	10	14	10	5	0.15			
	2.4				14					10	5	20	14	7	10	7	4	0.20			
	3.0				10					7	4	14	10	5	7	5	3	0.31			
	3.5				7					5	2	10	7	4	5	4	2	0.42			

Model MJT : Brass body, 3/2 way N.C. actuator valve.																			
Code	Fig. no.	Mat'l		Coil	Orifice mm		Temp. 5~℃						Working press. (0~ bar)						CV
		Seal	Body		Coil 4/3E			Coil 5			Coil 4		Coil 5		Coil 3E				
					Body	Top	N	J	V	N	J	V	1	2	1	2	1	2	
00	1	N	C S*	4 5 3E	1.6	1.6	80	150	90	150	10	16	14	20	7	10	0.10		
	2.0				7						10		5						
	3				2.4	20					5	13	7	16	4	7		0.20	
	4				3.0	2.2					4	10	5	13	3	5			0.31
	5				3.5	2.5					2	7	4	10	2	3			

Model MRJ : Brass body, 3/2 way N.O. actuator valve.																
Code	Fig. no.	Mat'l		Coil	Orifice mm		Temp. 5~℃						Working press. (0~ bar)			CV
		Seal	Body		Coil 4/3E			Coil 5			Coil 4	Coil 5	Coil 3E			
					Body	Top	N	J	V	N				J	V	
00	1	N	C S*	4 5 3E	2.0	1.6	80	150	90	150	7	10	3	0.10		
	2				2.4	2.0					5	7	2	0.15		
	3				2.4	2.2					3	5	1	0.17		
	4				3.0	2.5					1	3	-	0.20		
	5				3.5	3.0					-	1	-	0.31		

* S.S. body is available.