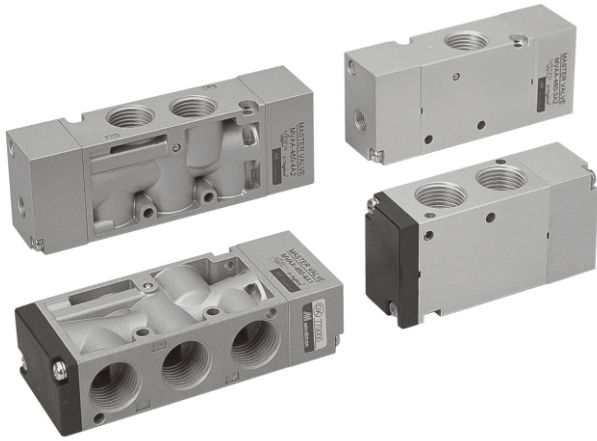


MVAA-460 series

MASTER VALVE



Specification:

Model	MVAA-460-3A1,A2	MVAA-460-4A1,A2
Bore No.	15A	
Port size	G 1/2	
No. of port	3	5
Medium	Air	
Operating pressure range	0~8 kgf/cm ²	
Proof pressure	10 kgf/cm ²	
Effective orifice	50 mm ²	
Pilot pressure range	2~7 kgf/cm ²	
Ambient temperature	-5~ +60°C (No freezing)	
Weight	300 g	326 g
		275 g
		338 g

Order example:

MVAA - 460 - 4A2 - NC - PT

MODEL

BODY WIDTH

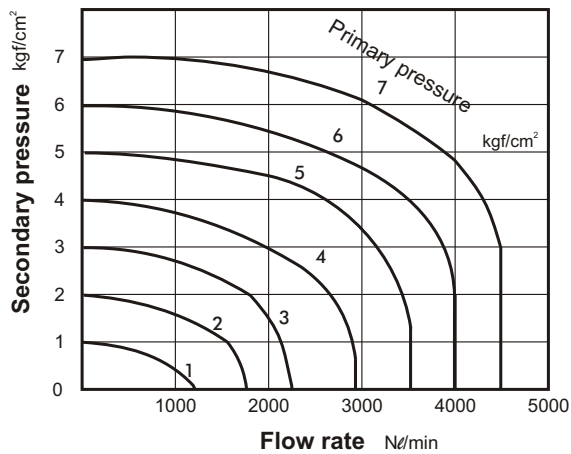
3: 3way
4: 4way

A1: Single Air Operate
A2: Double Air Operate

NC: Normally closed
NO: Normally open
(Only for 3A1 type)

PORT THREAD
Blank: G thread
PT: PT thread
NPT: NPT thread

Flow features:



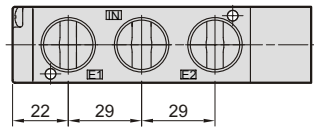
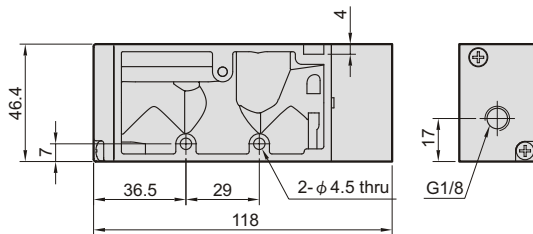
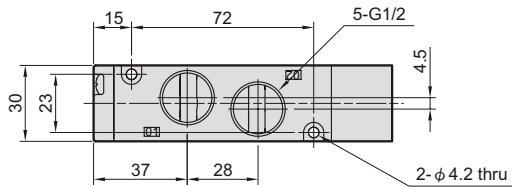
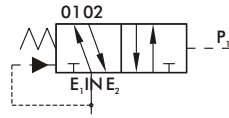
MVAA-460

MASTER VALVE

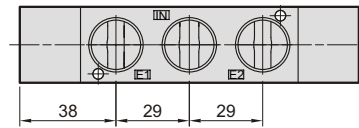
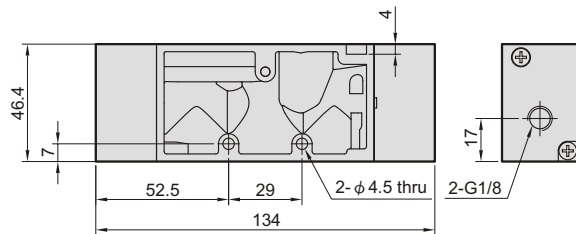
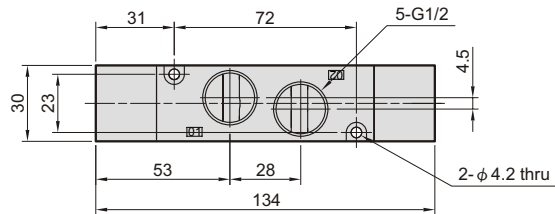
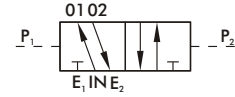


Dimensions:

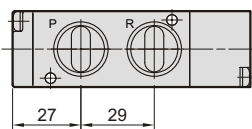
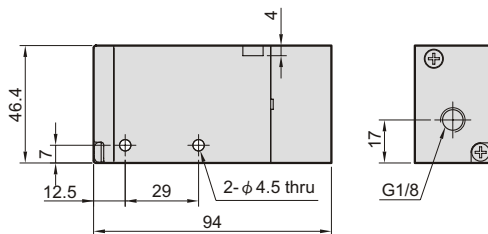
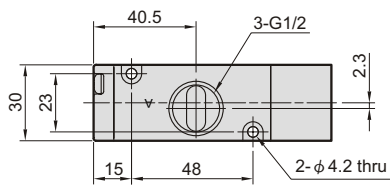
MVAA-460-4A1



MVAA-460-4A2



MVAA-460-3A1-NC



MVAA-460-3A2

