

MVSA-300 series

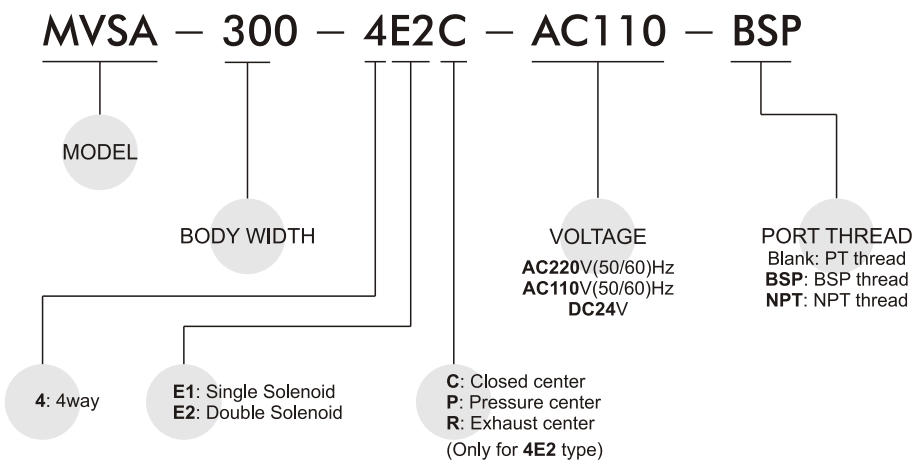
SOLENOID VALVE



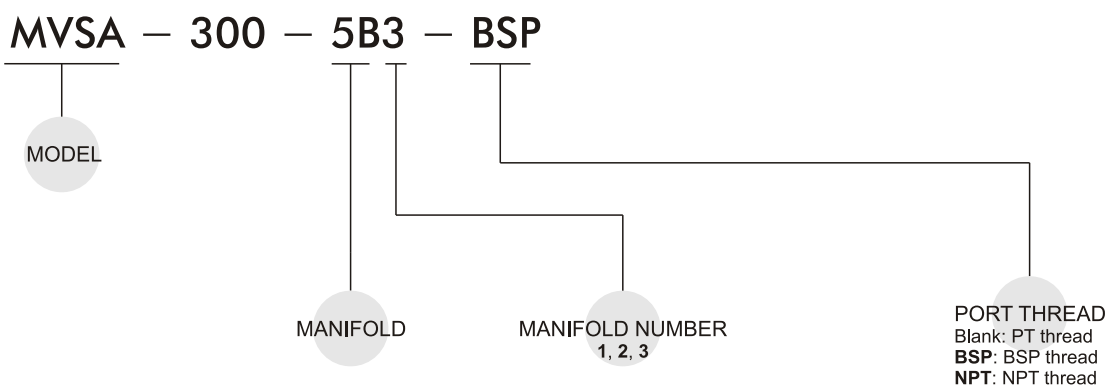
Specification:

Model	MVSA-300-4E1	MVSA-300-4E2	MVSA-300-4E2C.P.R
Bore No.	10A		
Port size	PT 3/8		
No. of port	5		
No. of position	2	2	3
Medium	Air		
Operating pressure range	2~7 kgf/cm ²		3~7 kgf/cm ²
Proof pressure	10 kgf/cm ²		
Effective orifice	35 mm ²		25 mm ²
Response time	50 ms		
Ambient temperature	-5~ +50°C (No freezing)		
Voltage	AC110V, 220V (50/60)Hz, DC24V		
Power consumption	AC=3.5VA, DC=3.5W		
Available voltage range	± 10%		
Insulation class	B class		
Weight	381 g	545 g	714 g

Order example of valve:



Order example of manifold:

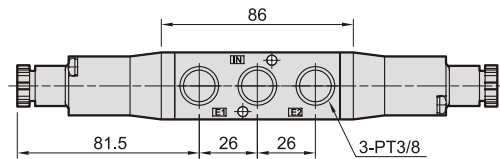
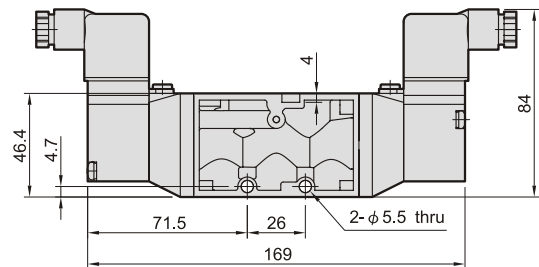
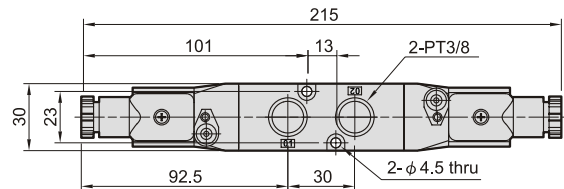
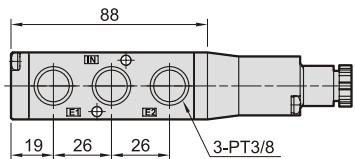
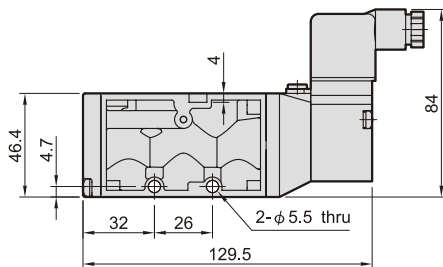
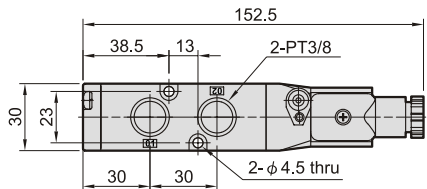


MVSA-300

SOLENOID VALVE



Dimensions:

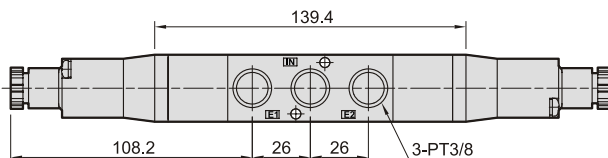
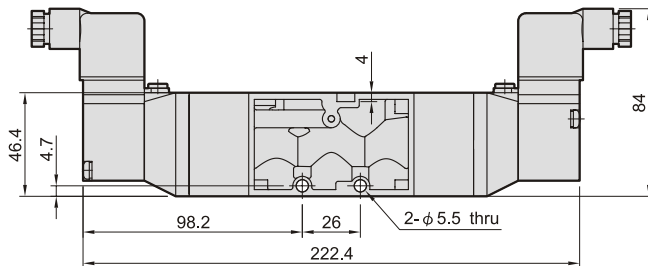
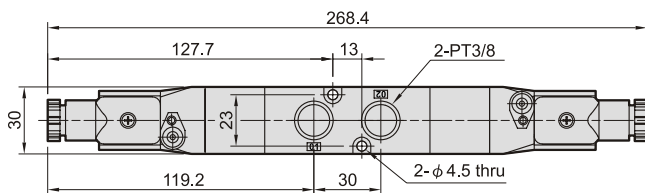
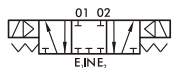


MVSA-300-4E2C.PR

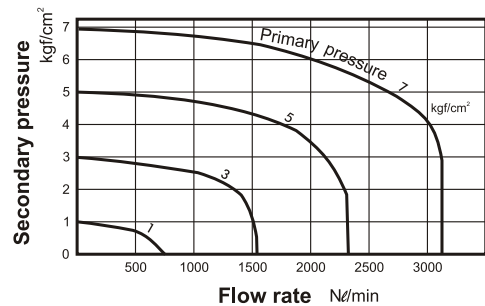
MVSA-300-4E2C

MVSA-300-4E2P

MVSA-300-4E2R



Flow features:



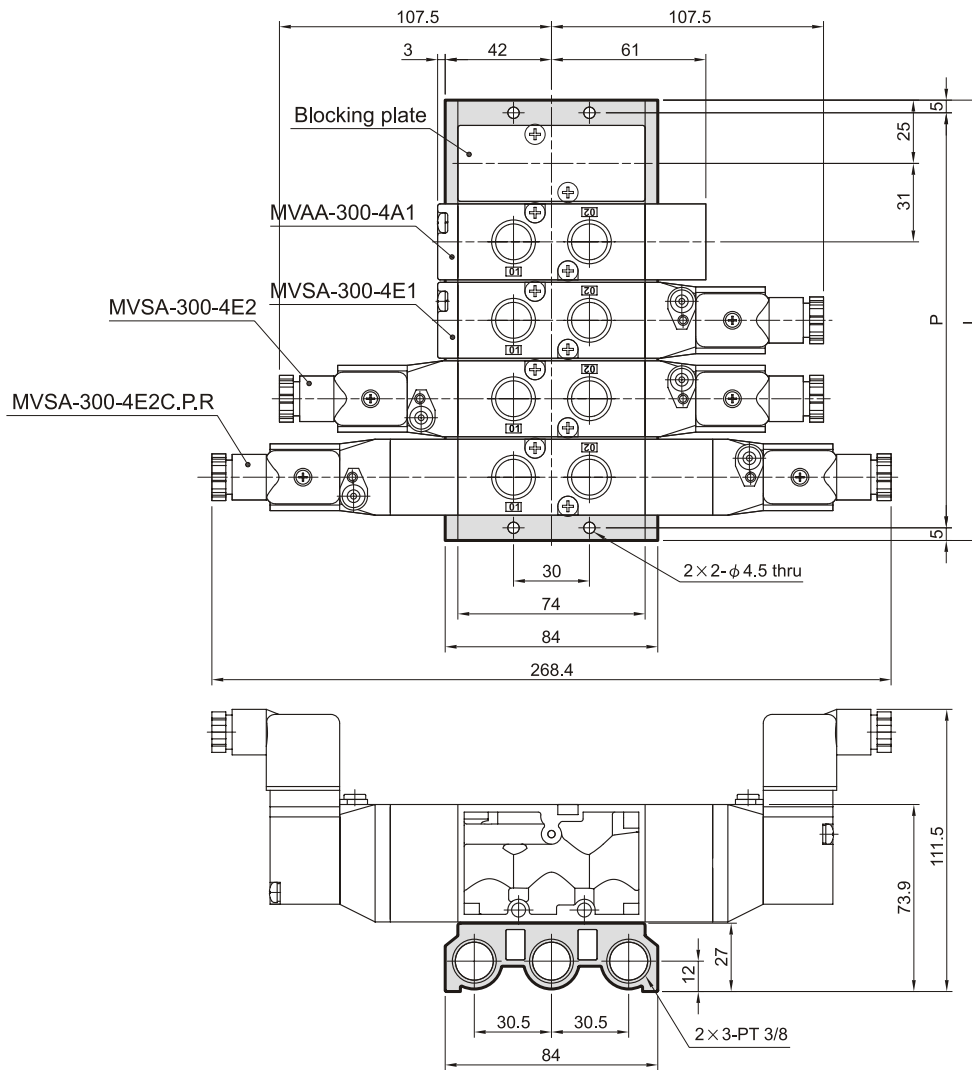
MVSA-300

SOLENOID VALVE



Manifold of solenoid valve:

MVSA-300-5B*



No. of stations	P	L
2	71	81
3	102	112
4	133	143
5	164	174
6	195	205
7	226	236
8	257	267
9	288	298
10	319	329