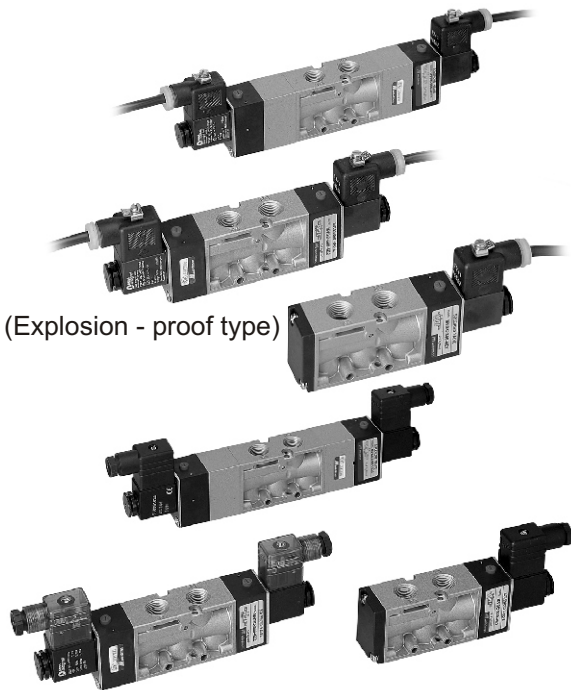


MVSC-300 series

SOLENOID VALVE

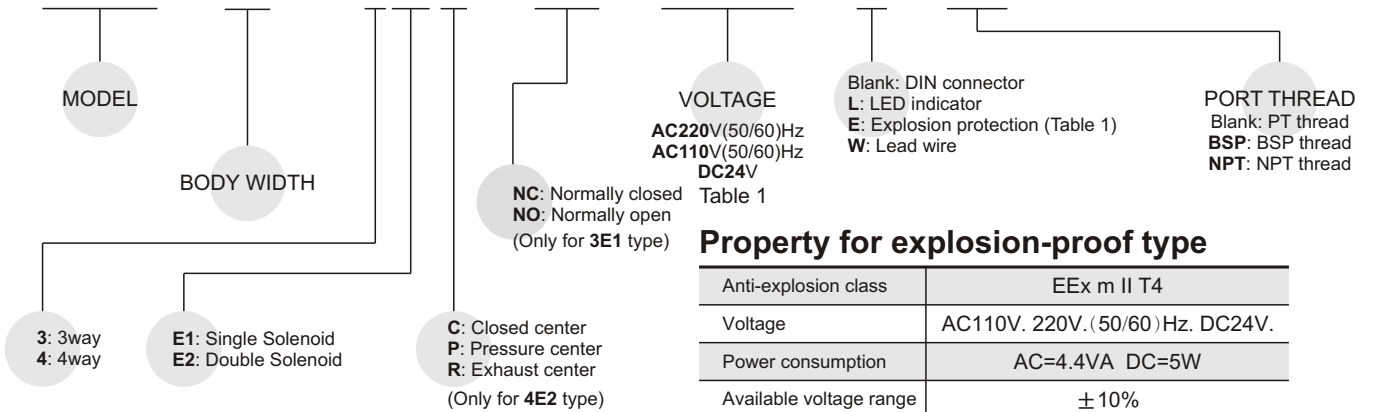


Specification:

| Model | MVSC-300-3E1,E2 | MVSC-300-4E1,E2 | MVSC-300-4E2C.P.R |
|--------------------------|-------------------------------|-----------------|-------------------------|
| Bore No. | 10A | | |
| Port size | PT 3/8 | | |
| No. of port | 3 | 5 | |
| No. of position | 2 | 2 | 3 |
| Medium | Air | | |
| Operating pressure range | 2~7 kgf/cm ² | | 3~7 kgf/cm ² |
| Proof pressure | 10 kgf/cm ² | | |
| Effective orifice | 35 mm ² | | 25 mm ² |
| Ambient temperature | - 5~+ 50℃ (No freezing) | | |
| Response time | 50 ms | | |
| Voltage | AC110V, 220V (50/60)Hz, DC24V | | |
| Power consumption | AC=6/4.9VA DC=2.5W | | |
| Available voltage range | ± 10% | | |
| Insulation class | F class | | |
| Weight | 350 g | 439 g | 293 g 387 g 565 g |

Order example of valve:

MVSC - 300 - 4E2C - NC - AC110 - L - BSP



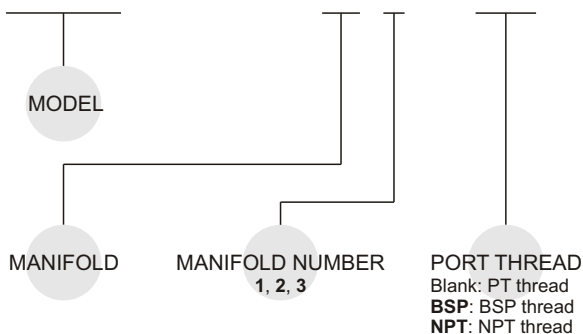
Property for explosion-proof type

| | |
|-------------------------|---------------------------------|
| Anti-explosion class | EEx m II T4 |
| Voltage | AC110V, 220V, (50/60)Hz, DC24V. |
| Power consumption | AC=4.4VA DC=5W |
| Available voltage range | ± 10% |
| Insulation class | F class |

Order example of manifold:

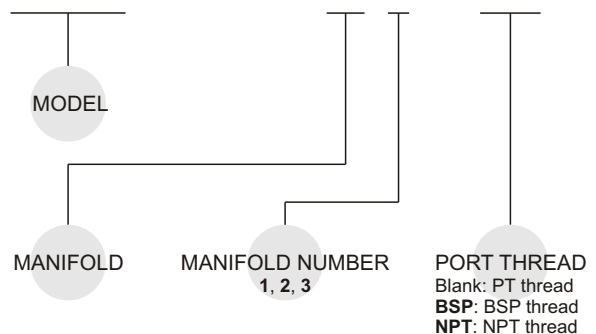
3 way

MVSC - 300 - 3B3 - BSP



4 way

MVSA - 300 - 5B3 - BSP



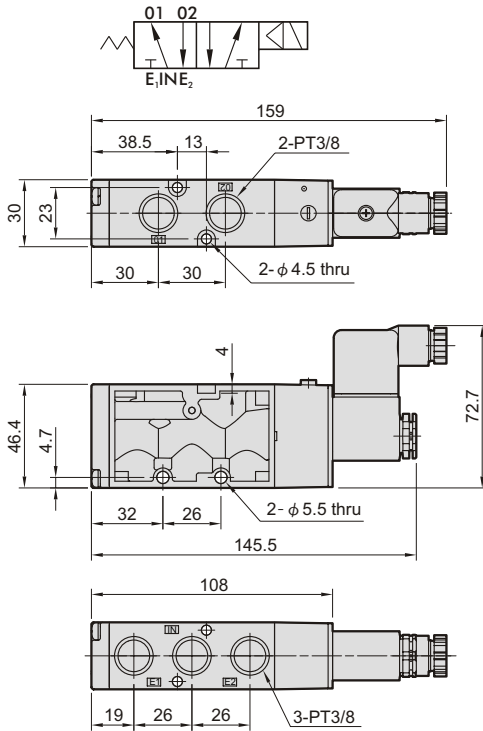
MVSC-300

SOLENOID VALVE

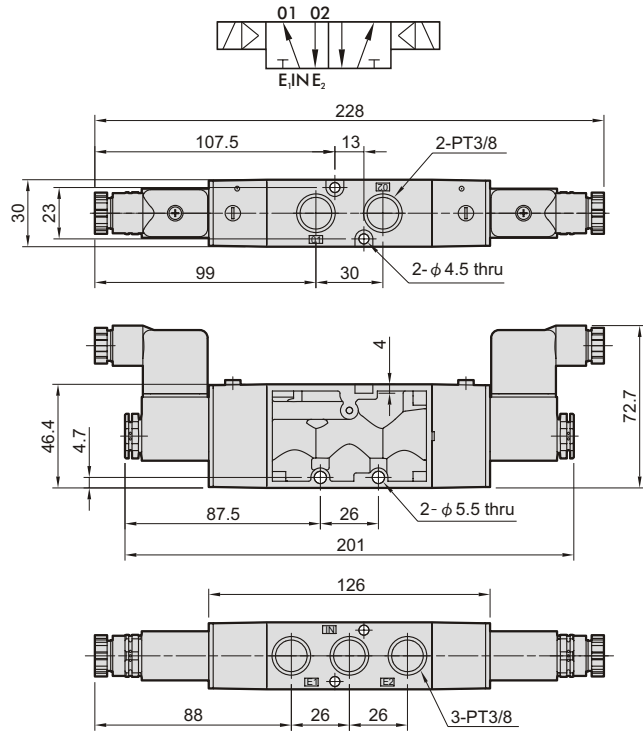


Dimensions:

MVSC-300-4E1



MVSC-300-4E2

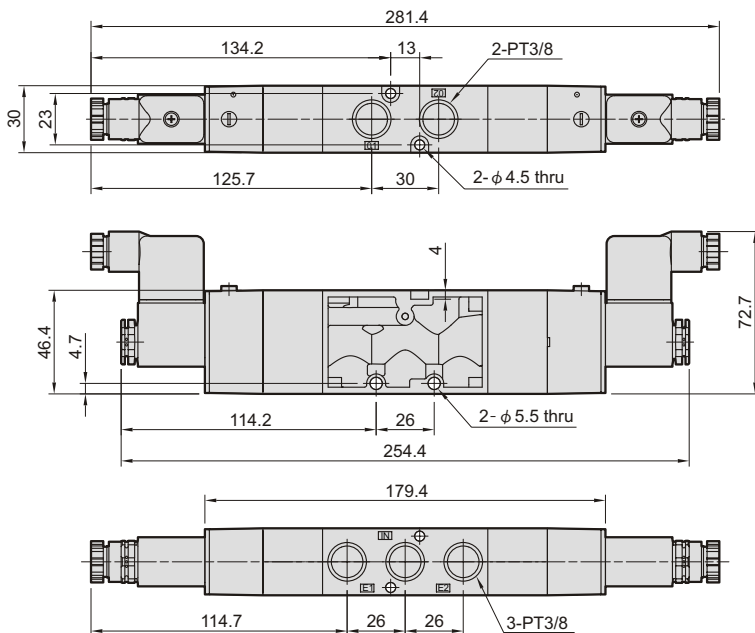


MVSC-300-4E2C.P.R

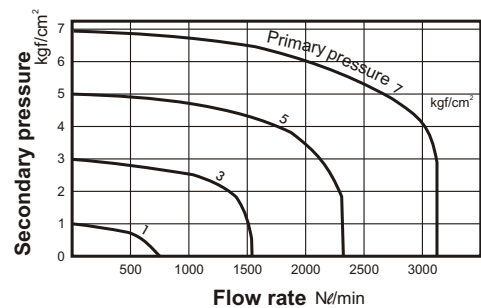
MVSC-300-4E2C

MVSC-300-4E2P

MVSC-300-4E2R



Flow features:



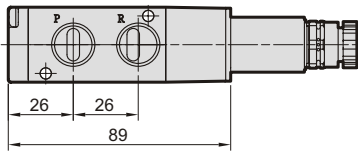
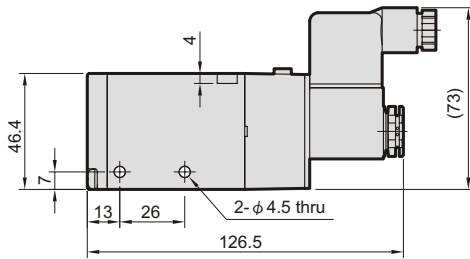
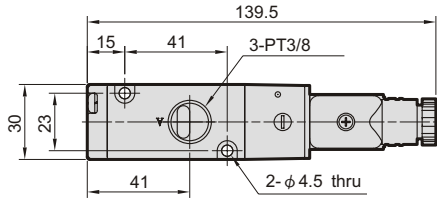
MVSC-300

SOLENOID VALVE

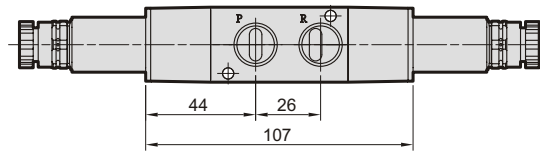
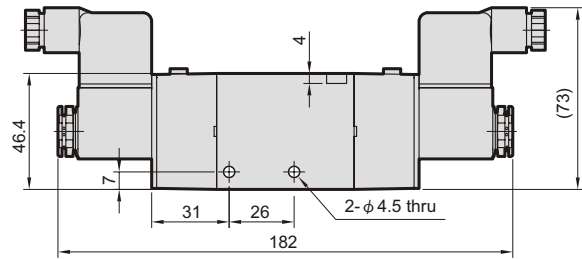
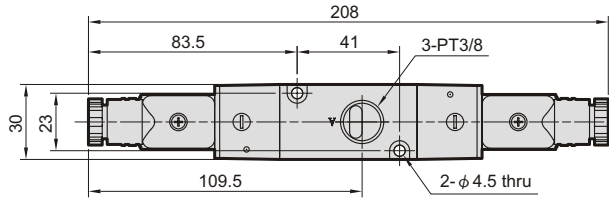


Dimensions:

MVSC-300-3E1-NC/NO

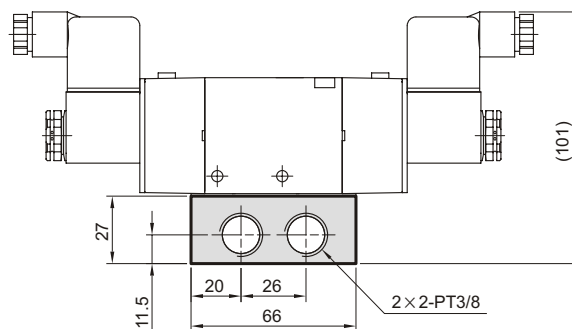
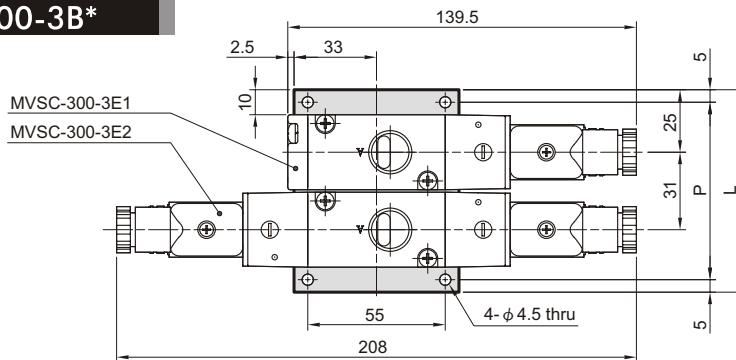


MVSC-300-3E2



Manifold of solenoid valve:

MVSC-300-3B*



| No. of stations | P | L |
|-----------------|-----|-----|
| 2 | 71 | 81 |
| 3 | 102 | 112 |
| 4 | 133 | 143 |
| 5 | 164 | 174 |
| 6 | 195 | 205 |
| 7 | 226 | 236 |
| 8 | 257 | 267 |
| 9 | 288 | 298 |
| 10 | 319 | 329 |

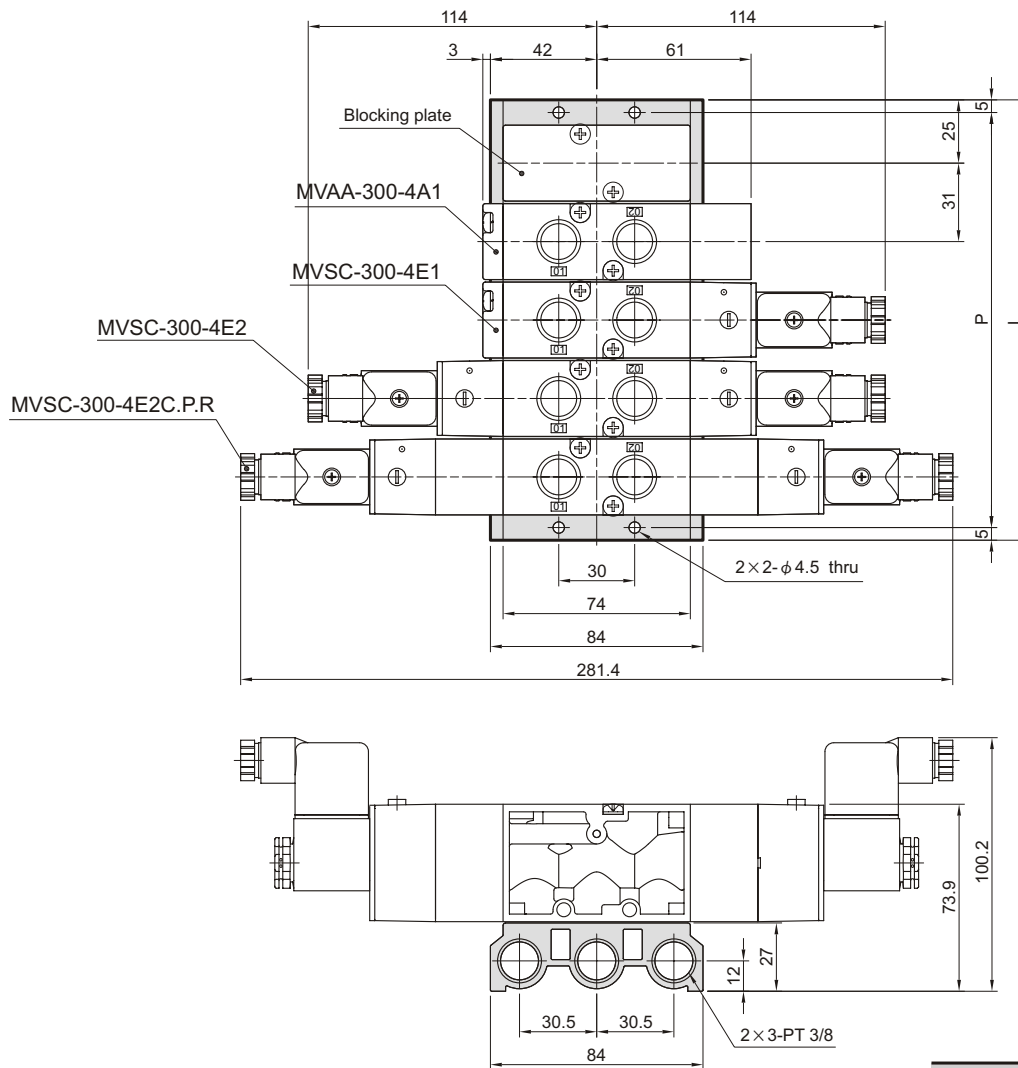
MVSC-300

SOLENOID VALVE



Manifold of solenoid valve:

MVSC-300-5B*



| No. of stations | P | L |
|-----------------|-----|-----|
| 2 | 71 | 81 |
| 3 | 102 | 112 |
| 4 | 133 | 143 |
| 5 | 164 | 174 |
| 6 | 195 | 205 |
| 7 | 226 | 236 |
| 8 | 257 | 267 |
| 9 | 288 | 298 |
| 10 | 319 | 329 |