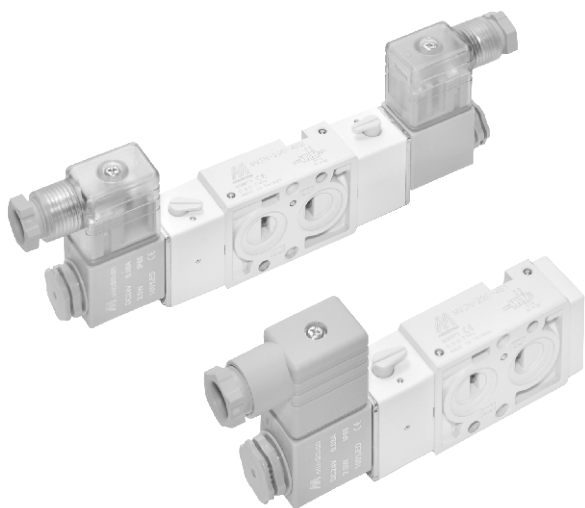


MVSN-220 series

NAMUR SOLENOID VALVE

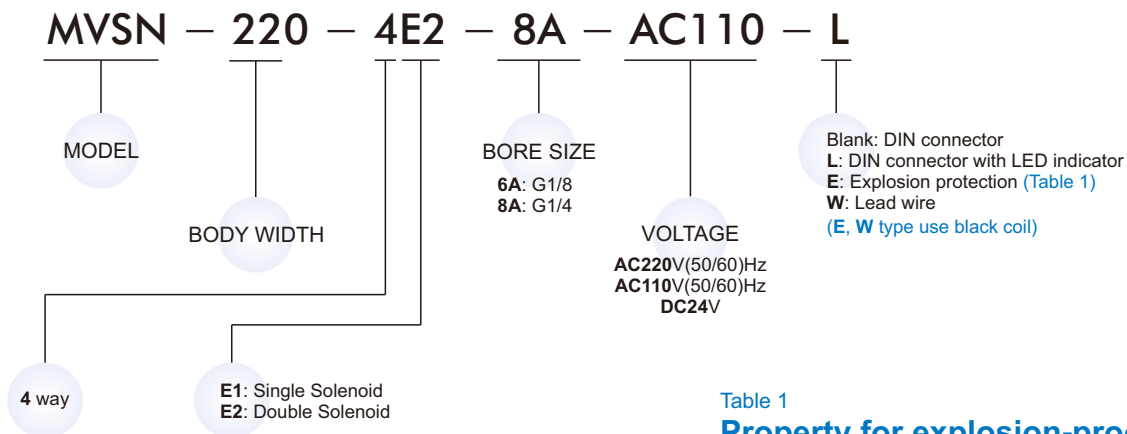


Specification



Model	4E1	4E2
Bore No.	6A, 8A	
Port size	G1/8, G1/4	
No. of port	5	
No. of position	2	
Medium	Air	
Operating pressure range	0.2~0.8 MPa	
Proof pressure	1 MPa	
Effective orifice	18 mm ²	
Response time	38 ms	
Ambient temperature	-5~+50°C (No freezing)	
Voltage	AC110V, AC220V (50/60)Hz, AC/DC 24V	
Power consumption	AC=6/4.9VA, DC=2.5W	
Available voltage range	± 10%	
Insulation class	F class	
Weight (Explosion - proof)	233 g (441 g)	343 g (761 g)

Order example



Flow features

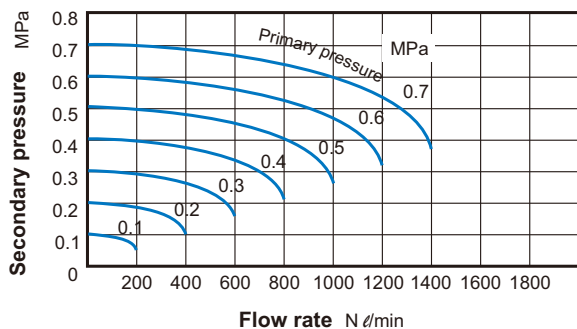


Table 1
Property for explosion-proof type

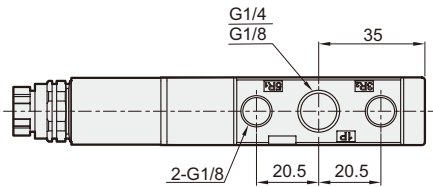
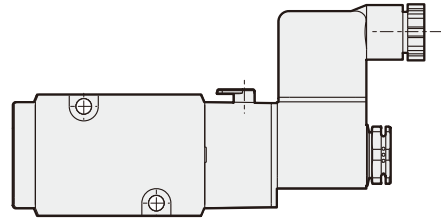
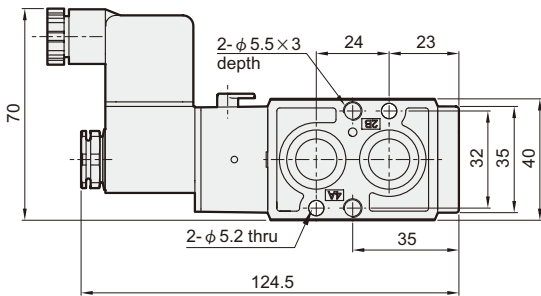
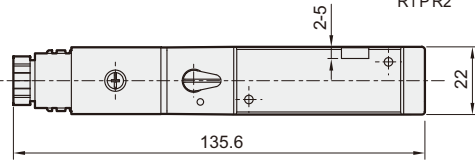
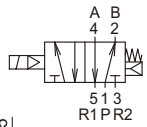
Anti-explosion class	EEx m II T4
Voltage	AC110V, 220V.(50/60)Hz, DC24V.
Power consumption	AC=4.4VA DC=5W
Available voltage range	± 10%
Insulation class	F class

MVSN-220 Dimensions

NAMUR SOLENOID VALVE



MVSN-220-4E1



MVSN-220-4E2

