

# MVSY-188 series

## SOLENOID VALVE

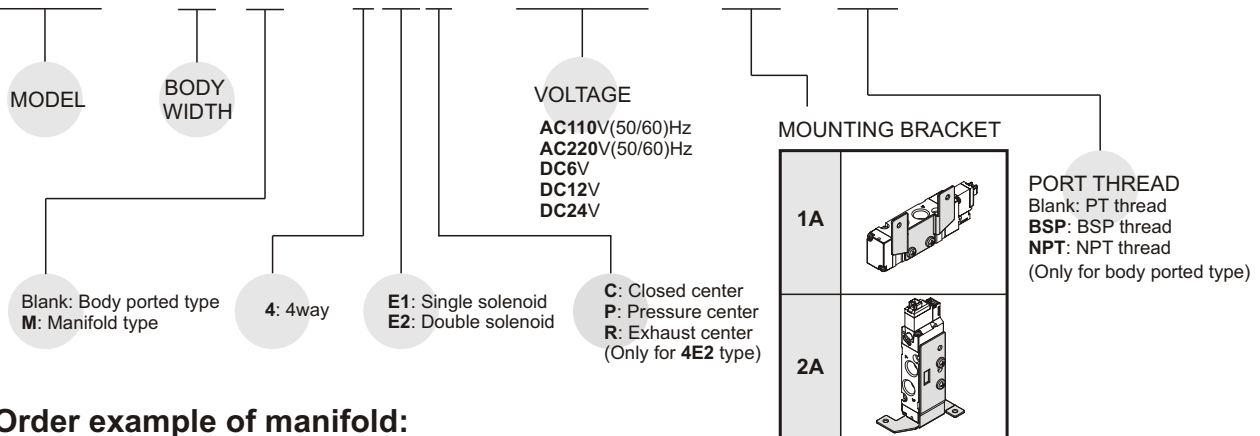


### Specification:

Model	MVSY-188-4E1	MVSY-188-4E2	MVSY-188-4E2C.P.R
Bore No.	8A		
Port size	PT 1/4		
No. of port	5		
No. of position	2	3	
Medium	Air		
Operating pressure range	1.5~7 kgf/cm <sup>2</sup>	2~7 kgf/cm <sup>2</sup>	
Proof pressure	10 kgf/cm <sup>2</sup>		
Effective orifice	15 mm <sup>2</sup>	12 mm <sup>2</sup>	
Response time	23 ms	50 ms	
Ambient temperature	+5~+50°C		
Voltage	AC110V, AC220V (50/60)Hz, DC6/12/24V		
Power consumption	AC=1.6 / 2.5VA, DC=1.2W (LED indicator)		
Available voltage range	±10%		
Insulation class	F class		
Weight	84 g	106 g	116 g

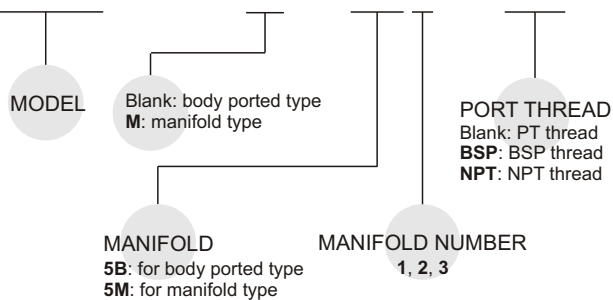
### Order example of valve:

**MVSY – 188M – 4E2C – AC110 – 1A – BSP**

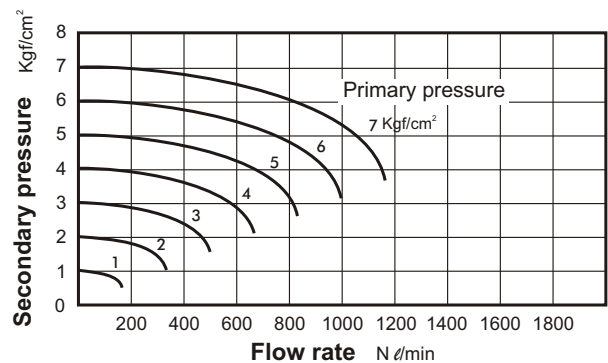


### Order example of manifold:

**MVSB – 188M – 5M3 – BSP**



### Flow features:



※Use the same manifold with MVSB.

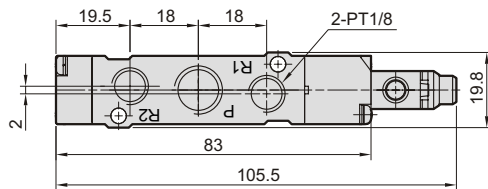
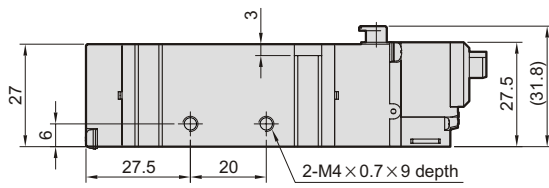
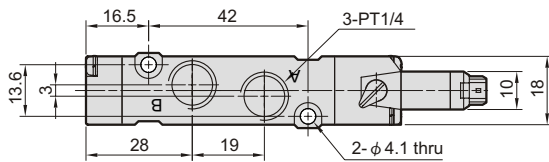
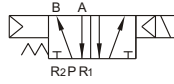
# MVSY-188

## SOLENOID VALVE

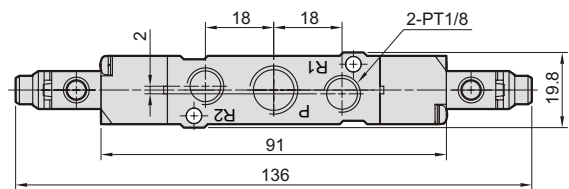
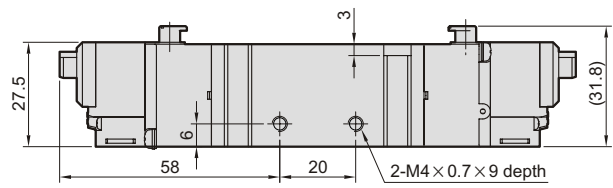
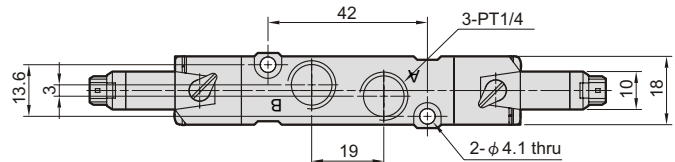
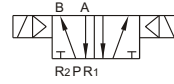


### Dimensions:

#### MVSY-188-4E1



#### MVSY-188-4E2

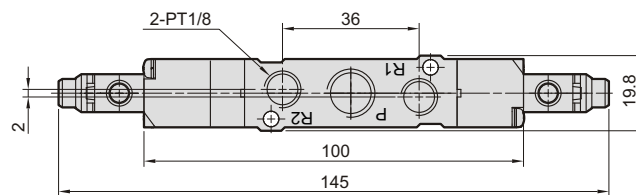
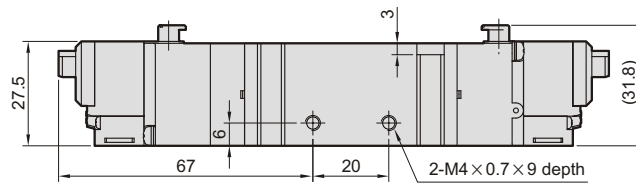
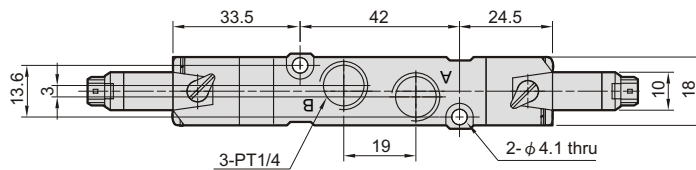
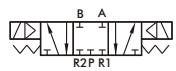


#### MVSY-188-4E2C.PR

##### MVSY-188-4E2C

##### MVSY-188-4E2P

##### MVSY-188-4E2R



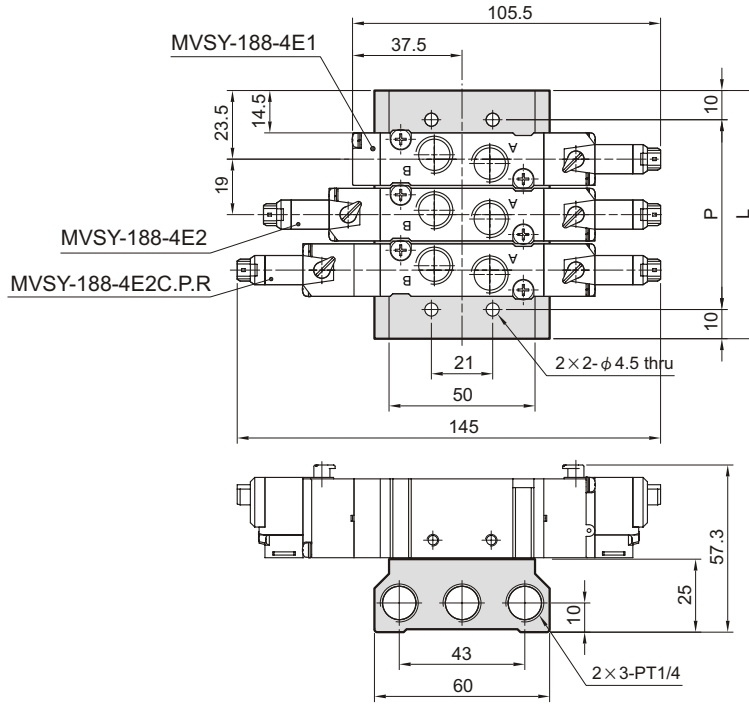
# MVSY-188

## SOLENOID VALVE



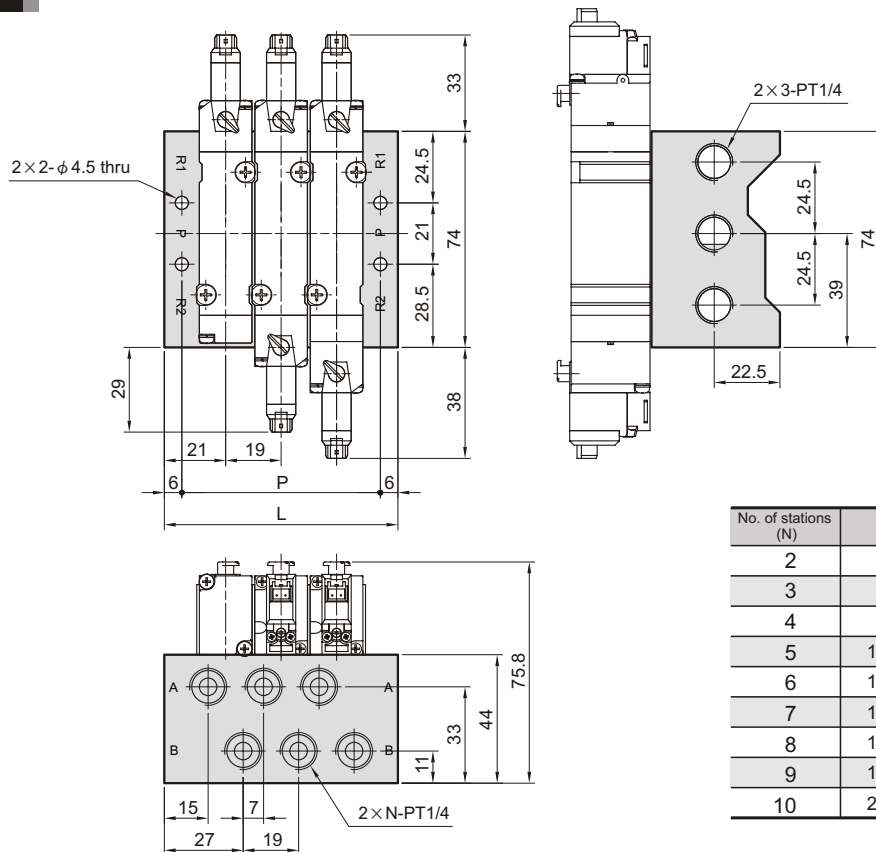
### Manifold of solenoid valve:

#### 5B\*



No. of stations	P	L
2	46	66
3	65	85
4	84	104
5	103	123
6	122	142
7	141	161
8	160	180
9	179	199
10	198	218

#### 5M\*



No. of stations (N)	P	L
2	49	61
3	68	80
4	87	99
5	106	118
6	125	137
7	144	156
8	163	175
9	182	194
10	201	213

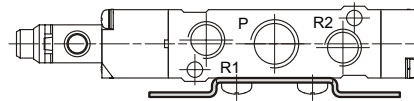
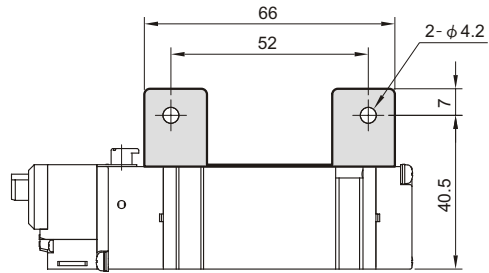
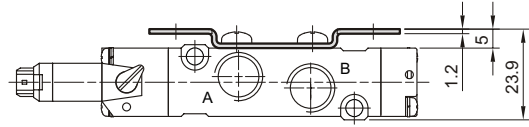
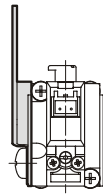
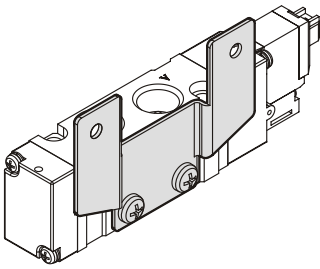
# MVSY-188

SOLENOID VALVE



## Mounting bracket:

1A



2A

